



WILDFLOWER + SILVER PALM PARK

MAY 26, 2020





AGENDA

- WILDFLOWER + SILVER PALM PARK
- WILDFLOWER PARK
 - SITE PLAN
 - SITE ELEMENTS
- SILVER PALM PARK
 - SITE PLAN
 - SITE ELEMENTS
- BRIDGE CONNECTOR
 - LIGHTING
- PROJECT COST

WILDFLOWER PARK + SILVER PALM PARK



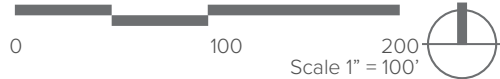
WILDFLOWER + SILVER PALM PARK

COUNCIL COMMENTS - MAY 13, 2019

- ✓ 1. ADD PLAYGROUND AREA IN WILDFLOWER PARK AS DISCUSSED AT MEETING. THE PLAN NOW INCORPORATES INTERACTIVE ART / PLAY FEATURES WHICH IS THE PLAYGROUND AREA. FEATURES ARE UNDER DEVELOPMENT.
- ✓ 2. NEED TO PROVIDE 50+ PARKING SPACES ON WILDFLOWER PARK AS DEPICTED IN THE "PREFERRED CONCEPT-WILDFLOWER PARK" PAGE. 49 SPACES ARE PROVIDED ON WILDFLOWER.
- ✓ 3. NEED TO PROVIDE ADDITIONAL GUEST PARKING ON SILVER PALM PARK. 10 SPACES ADDED TO SILVER PALM.
- ✓ 4. ENLARGE PUBLIC AREA AT THE SOUTHEAST CORNER OF PALMETTO PARK RD. AND NE 5TH AVE. HARDSCAPE AREA ENLARGED AT PALMETTO PARK AND NE 5TH, AS WELL AS MORE SAFETY BARRIERS.
- ✓ 5. NO CARS UNDER THE BRIDGE. ALL CAR PARKING REMOVED UNDER BRIDGE. THE DESIGN IS BEING WORKED THROUGH WITH PBC TO PROVIDE RESTRICTED ACCESS ONLY UNDER BRIDGE (BRIDGE TENDER, BRIDGE MAINTENANCE VEHICLES (PBC REQUIRED) EMERGENCY VEHICLES, ETC.).
- ✓ 6. RELOCATE RESTROOMS IN SILVER PALM PARK. RESTROOM BUILDING IS RELOCATED.
- ✓ 7. PROVIDE DETAILED DRAWINGS OF THE SILVER PALM PLAN TO MARINE ADVISORY BOARD. THE MOST CURRENT DESIGN INCORPORATES ALL OF THE MAB'S COMMENTS, INCLUDING WIDEN DRIVE LANES FROM 25' TO 30' AND PROVIDE A MINIMUM OF 11 VEHICULAR SPACES.
- ✓ 8. ENSURE PLAN CAN ACCOMMODATE POTENTIAL FOR FUTURE WATER TAXI. PER CITY COUNCIL DISCUSSIONS, THE FUTURE WATER TAXI LOCATION IS RELOCATED TO THE SILVER PALM PARK AREA.
- ✓ 9. ENSURE PLAN CAN ACCOMMODATE POTENTIAL FOR FUTURE DOCKAGE. FUTURE DOCKAGE COULD BE INCORPORATED AT WILDFLOWER; HOWEVER, DUE TO THE USACE SETBACKS RULES FROM THE CENTERLINE OF THE INTRACOASTAL, WE ARE LIMITED ON DOCKAGE ALONG WILDFLOWER PARK. SIMILAR TO THE WATER TAXI STOP, THIS COULD BE A CONFLICT FOR BOATERS/NON-MOTORIZED.
- ✓ 10. ENSURE THERE IS SUFFICIENT AREA TO ACCOMMODATE ADDITIONAL SIGNAGE. CURRENT LAYOUT PROVIDES AMPLE ROOM FOR SIGNAGE. TEAM IS DEVELOPING THE SIGNAGE LAYOUT.
- ✓ 11. ENSURE THE FLOATING WETLANDS ARE CLEAR OF ANY BOATING ACTIVITY. THE FLOATING WETLANDS WERE REDUCED TO THE AREA BETWEEN THE BRIDGE AND INTRACOASTAL BUMPERS, AND ULTIMATELY REMOVED DUE TO UTILITY EASEMENTS.
- ✓ 12. NEED ADDITIONAL AMENITIES ALONG THE ENTIRE SOUTHERN PORTION OF SILVER PALM PARK SUCH AS EXERCISE OR PICNIC AREAS. AREAS / NODES ARE PROVIDED FOR ADDITIONAL AMENITIES.
- ✓ 13. PROVIDE FOR SOME DOUBLE SIDED SEATING ALONG THE PEDESTRIAN PROMENADE. THE PEDESTRIAN PROMENADE SEATING IS FLEXIBLE AND CAN ACCOMMODATE SEATING ON EITHER SIDE.
- ✓ 14. STAIRS FROM THE NORTH SIDE OF PALMETTO PARK ROAD ACCESSING THE WILDFLOWER SITE. TEAM MET WITH PBC, WHICH DETERMINED THAT THE DESIGN WOULD NEED TO INCORPORATE ADA ACCESS (I.E. RAMP OR ELEVATOR) IN ADDITION TO THE STAIRS. BASED ON THIS RESPONSE, THE DESIGN CURRENTLY DOES NOT INCLUDE STAIRS; HOWEVER, IF COUNCIL WANTS TO MOVE FORWARD WITH THE STAIRS, WE CAN ADD THE STAIRS AND RAMP / ELEVATOR.



FINAL SITE PLAN - MARCH 3, 2020



WILDFLOWER PARK

MARCH 3, 2020

LEGEND

- | | |
|-----------------------------------|---|
| 1. DROP-OFF WITH ICONIC ART | 10. ENTRY PLAZA |
| 2. PARKING [50 SPACES] | 11. SEATWALLS |
| 3. PEDESTRIAN PROMENADE | 12. TREES AND PALMS [TO BE RELOCATED AND NEW] |
| 4. INTRACOASTAL VIEWING STEPS | 13. BIORETENTION PLANTING AREA |
| 5. HISTORIC STEPS | 14. PARK CONNECTOR [UNDER BRIDGE] |
| 6. PAVILION / RESTROOM | 15. STAGE AREA |
| 7. EVENT LAWN | 16. FLEXIBLE SEATING AREA |
| 8. INTERACTIVE ART / PLAY FEATURE | 17. PLANTING AT PROPERTY WALLS |
| 9. INTERACTIVE WATER FEATURE | |



WILDFLOWER PARK

SITE ELEMENTS

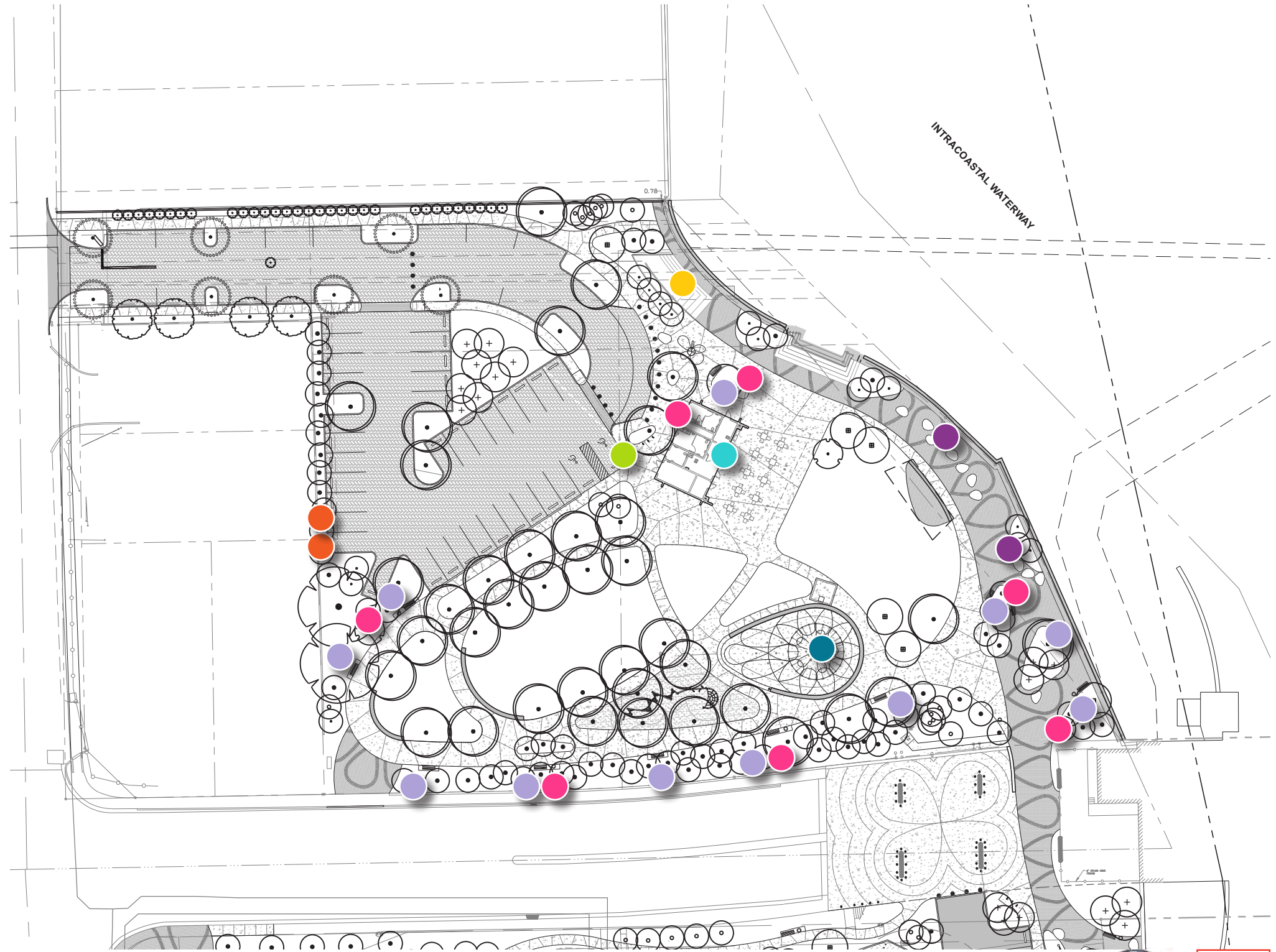
- BENCHES
- SCULPTURAL SEATING
- BIKE RACKS
- TRASH RECEPTACLES
- DRINKING FOUNTAIN
- EV CHARGING STATION



SPLASH PAD



GRAND STEPS



0 60 120
Scale 1" = 60'



SILVER PALM PARK

MARCH 3, 2020

LEGEND

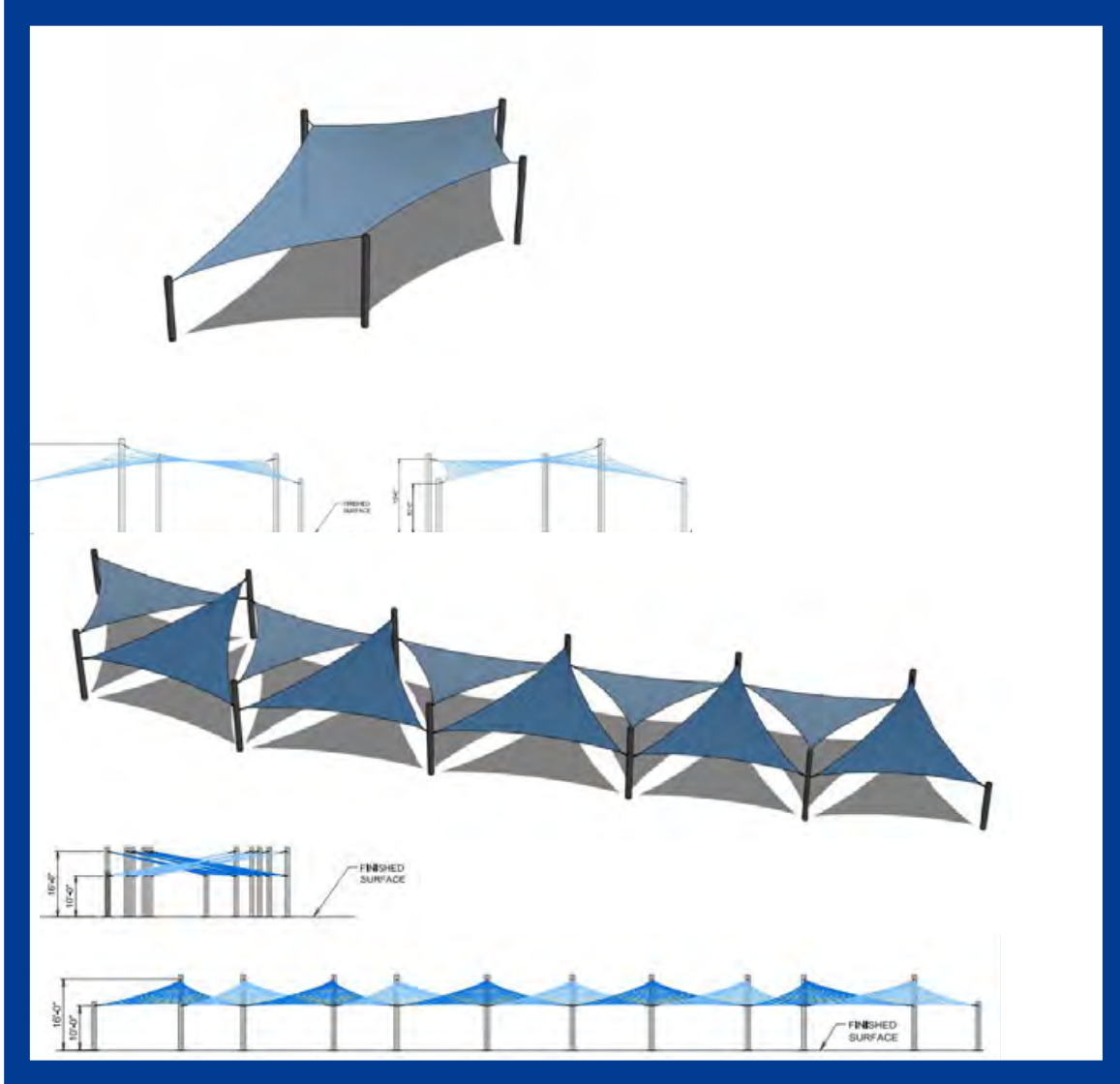
- | | |
|----------------------------------|-----------------------------------|
| 1. PEDESTRIAN PLAZA | 16. GRASS PAVE OVERFLOW PARKING |
| 2. SEATWALLS | [24 SPACES] |
| 3. PEDESTRIAN PATH | 17. BOAT WASHING STATION |
| 4. EXISTING TREES TO REMAIN | 18. ACCESSIBLE PARKING [3 SPACES] |
| 5. PARK CONNECTOR | 19. VEHICLE PARKING [14 SPACES] |
| [UNDER BRIDGE] | 20. VEHICLE + TRAILER PARKING |
| 6. PEDESTRIAN PROMENADE | [29 SPACES] |
| 7. SHADE SAILS | 21. GRASS PAVE OVERSIZED TRAILER |
| 8. PARK OPEN SPACE | PARKING [6 SPACES] |
| 9. INTRACOASTAL PLAZA OVERLOOK | 22. FISH CLEANING STATION |
| 10. SEATING AND VIEWING AREA | 23. STORAGE |
| 11. ACCESS FOR BRIDGE TENDER | 24. EXISTING LIFT STATION |
| 12. PROPOSED RESTROOM | 25. ACTIVITY NODES ALONG |
| 13. BOAT STAGING AREA | PATHWAY |
| 14. EXISTING BOAT RAMP | 26. STEPS FROM PALMETTO PARK |
| 15. PROPOSED BOAT RAMP & JET SKI | ROAD |
| LAUNCH | 27. POTENTIAL WATER TAXI LOCATION |



SILVER PALM PARK

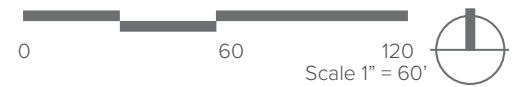
SITE ELEMENTS

- BENCHES
- TRASH RECEPTACLES
- SCULPTURAL SEATING
- DRINKING FOUNTAIN
- BIKE RACKS
- EXERCISE STATIONS



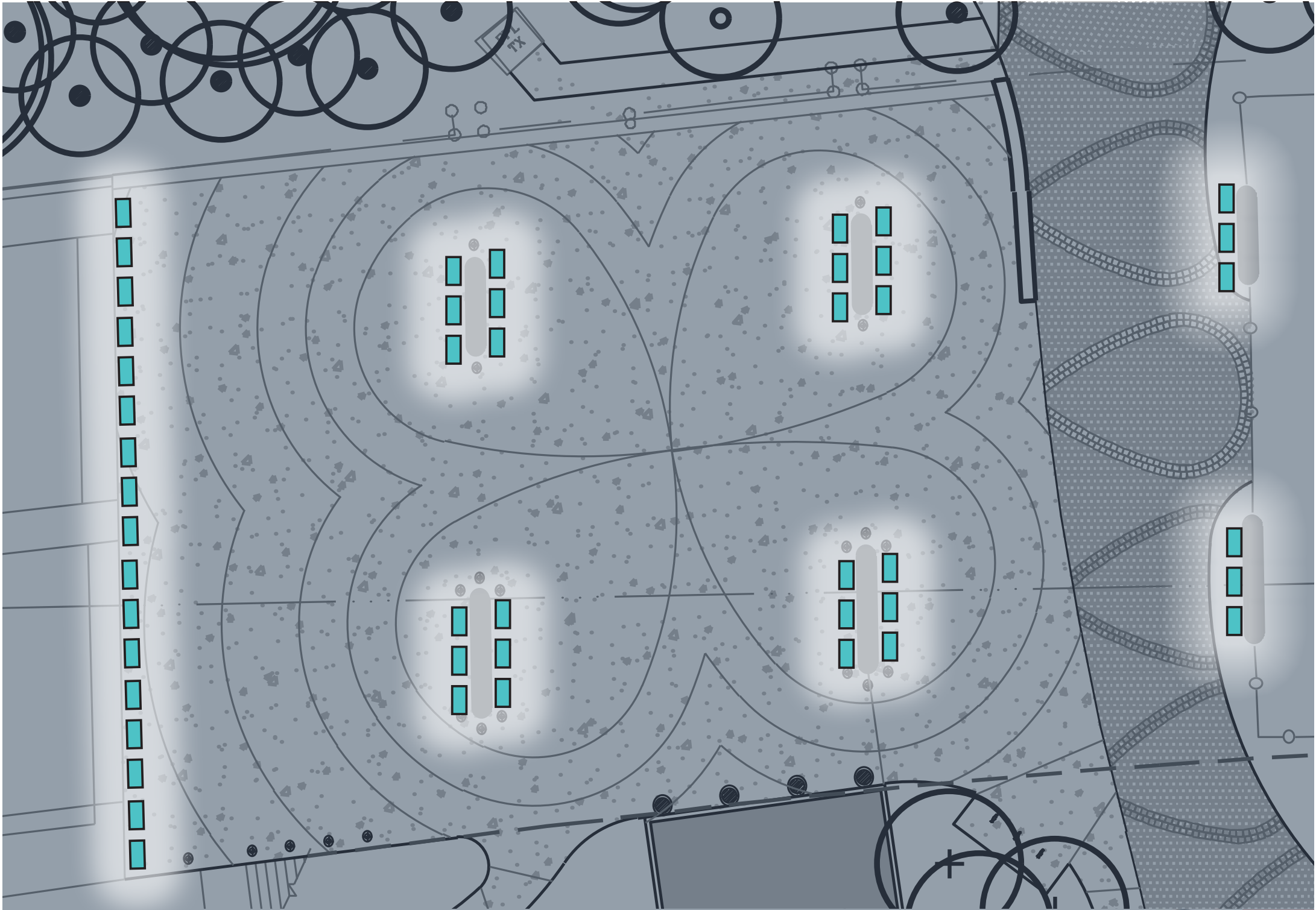
SHADE SAILS

WILDFLOWER PARK + SILVER PALM PARK



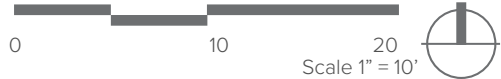
BRIDGE CONNECTOR

LIGHTING



LED COLOR CHANGING DOWNLIGHTS

WILDFLOWER PARK + SILVER PALM PARK



Wildflower Park and Silver Palm Park Historic Project Costs

- In 2017 - total estimated project cost \$1,275,000
 - This project included design and construction of floating docks
- In 2018 Wildflower Park Project was revised -total estimated project cost \$4,300,000
 - Project included:
 - Re-construction of the Wildflower Park seawall
 - Passive park elements
 - Walkway connection to Silver Palm Park
- In 2020 Wildflower/Silver Palm Park –total estimated project costs \$8,250,000
 - Project included:
 - Enhanced park features and buildings including new bathroom relocation at Silver Palm Park
 - Palmetto Park Bridge connector enhancements
- In 2021 Wildflower/Silver Palm Park –total estimated project costs \$11,008,000



Wildflower Park, Silver Palm Park and Under the Bridge Connector Estimated budget FY 2021

Park	Project Costs
Wildflower Park	\$6,020,400
Silver Palm Park	\$4,440,400
Bridge Connector	\$547,200
Total	\$11,008,000

Note: costs include the following:

- Seawall construction (Wildflower)
- Privacy wall (north portion of Wildflower)
- Contingency
- Const. administration, Contractor costs and Insurance



Wildflower Park

Detailed Project Cost Breakdown

Total Estimated Cost: \$6,020,400

Description	Item	Total
BUILDING	Restroom Building	\$466,235
	Restroom Pavilion	\$674,750
	Technology	\$10,000
Building Total		\$1,150,985
DEMOLITION	Demolition of Existing Curb	\$96,000
	Palm and tree relocation	\$107,000
	Palm and tree removal	\$5,880
Demolition Total		\$208,880
HARDSCAPE	Water Feature	\$325,000
	Concrete for walking path and splash pad	\$156,440
	Synthetic Turf with safety Pad	\$47,750
	Vehicular Pavers (promenade)	\$168,450
	Seat Walls (3)	\$60,750
	Seatwall at Seawall	\$45,000
	Grand Stairs	\$10,000
	curbs, utilities, pavement marking etc	\$104,365
Hardscape Total		\$917,755
Landscape Total	Trees, irrigation, mulch, shrubs etc	\$121,240

LIGHTING	Pole lights, step lights, outlets	\$60,869
	Pedestrian Poles (29)	\$73,370
	LED Strip Light at Seat Wall	\$52,575
	Electric Car Charging (2)	\$20,000
Lighting Total		\$206,814
SITE ACCESSORIES	Benches and picnic tables	\$25,240
	Stage Structure with shade	\$50,000
	Stone Seating	\$54,000
	Bike racks, waste recepticals and bollards	\$28,300
	Sculptural Play Piece	\$65,000
	Sculpture Initial Costs	\$7,000
	Sculpture Maintenance (1st year)	\$10,200
Signage (walls, wayfinding, directional)	\$20,000	
Site Accessories Total		\$259,740
Seawall		\$1,750,000
North Privacy Wall		\$115,000
Const. admin, contractor costs, insurance		\$993,414
Contingency		\$296,541
Total estimated costs for Wildflower Park		\$6,020,369



Silver Palm Park

Detailed Project Cost Breakdown

Total Estimated Cost: \$4,440,400

Description	Items	Total
BUILDING	Restroom	\$462,000
	Storage	\$210,000
	Technology	\$10,000
	Building Total	\$682,000
DEMOLITION	Demolition of Existing bathroom	\$24,840
	Demo of curbs and asphalt	\$61,500
	Palm and tree removal/relocation	\$114,000
Demolition Total	\$200,340	
HARDSCAPE	Fence, gates, dumpsters etc	\$56,436
	Concrete	\$131,220
	Synthetic Turf and gravel	\$67,700
	Vehicular Pavers	\$78,200
	Asphalt	\$308,950
	Reinforced Turf Stabilization	\$100,770
	Seat Walls	\$45,000
	Retaining Wall	\$38,000
	Boat Ramp Conversion and concrete	\$50,000
	Curbs, utilities and markings	\$132,600
Hardscape Total	\$1,008,876	

LANDSCAPING	Trees, mulch and turf	\$124,025
	Irrigation	\$167,960
	Shrubs and Groundcover	\$195,500
Landscaping Total		\$487,485
LIGHTING	Pole Lighting and security cameras	\$127,830
	Pedestrian Poles (29)	\$73,370
Lighting Total		\$201,200
SITE ACCESSORIES	Backed Bench with Arms	\$14,400
	Shade Sails	\$300,000
	Stone Seating	\$67,500
	Waste Receptical	\$16,000
	Fitness Equipment	\$21,000
	Fish Cleaning Station	\$1,200
	Signage (walls, wayfinding, directional)	\$20,000
Site Accessories Total		\$440,100
Const. admin, contractor costs, insurance		\$1,093,837
Contingency		\$326,519
Total estimated costs for Silver Palm Park		\$ 4,440,357



Under the Bridge Connector Detailed Project Cost Breakdown

Total Estimated Cost: \$547,200

Description	Items	Total
Demolition Total	Demo and Site Prep	\$ 125,230
Hardscape Total	Fencing, utilities, concrete and pavers	\$ 107,122
Landscape Total	Irrigation, mulch trees and shrubs	\$ 15,643
Lighting Total	Under the bridge lighting	\$ 120,000
Site Accessories Total	Bike racks and Bollards	\$ 30,300
Const. admin, contractor costs, insurance		\$ 121,058
Contingency		\$ 27,830
Total estimated cost for Under the Bridge Connector		\$ 547,183





PLANNING | LANDSCAPE ARCHITECTURE | URBAN DESIGN

BALTIMORE | FORT LAUDERDALE | NEW YORK | ORLANDO | SHANGHAI
www.edsaplan.com